

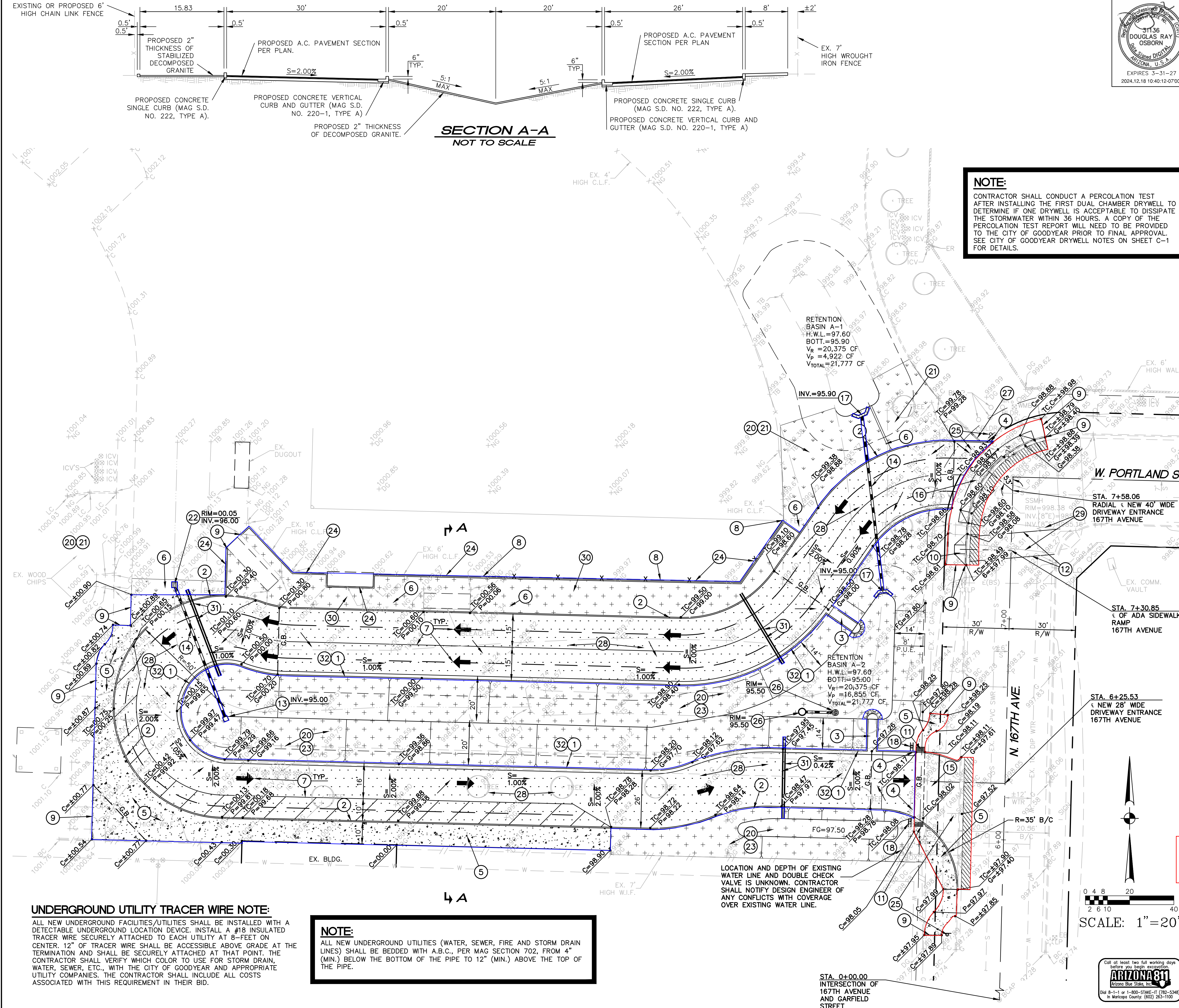
HESS - ROUNTREE, INC.
CONSULTING ENGINEERS & LAND SURVEYORS
9831 SOUTH 51ST STREET, SUITE C110
PHOENIX, ARIZONA 85044 (480)496-0244

DES. **DRO** DRN. **ANM** CKD **DRO** JOB NO. **2403-04**

GRADING AND DRAINAGE CONSTRUCTION NOTES:

1. INSTALL CONCRETE VERTICAL CURB AND GUTTER (MAG STANDARD DETAIL NO. 220-1, TYPE A).
2. INSTALL CONCRETE SINGLE CURB (MAG STANDARD DETAIL NO. 222, TYPE 'A').
3. INSTALL CONCRETE SPLASHPAD (SEE DETAIL ON SHEET C-2).
4. CONSTRUCT CURB TERMINATION (MAG STANDARD DETAIL NO. 222).
5. CONSTRUCT CONCRETE SIDEWALK (MAG STANDARD DETAIL NO. 230).
6. MATCH EXISTING FINISH GRADE AT 5:1 MAXIMUM SLOPE FROM 1" BELOW TOP OF CURB ELEVATION.
7. PAINT STRIPE EXISTING BUS LOOP DRIVE TO THE ALIGNMENTS INDICATED ON THE PLANS.
8. INSTALL 6' HIGH CHAIN LINK FENCE.
9. MATCH EXISTING ELEVATION AND LOCATION.
10. CONSTRUCT SIDEWALK RAMP (MAG STANDARD DETAIL NO. 238-3). SEE MAG SECTION 340 FOR FINISH.
11. CONSTRUCT 2' OF DETECTABLE WARNING DOMES PER CITY OF GOODYEAR APPROVED MATERIALS LIST.
12. PAINT STRIPE CROSSWALK PER CITY OF GOODYEAR STANDARDS.
13. CONSTRUCT CONCRETE SPLASHBLOCK (SEE DETAIL ON SHEET C-2).
14. INSTALL 12" H.D.P.E. PIPE WITH SMOOTH INTERIOR AND 10.8 P.S.I. JOINTS.
15. CONSTRUCT RETURN TYPE DRIVEWAY ENTRANCE (MAG STANDARD DETAIL NO. 251, MODIFIED PER PLAN).
16. CONSTRUCT WING TYPE DRIVEWAY ENTRANCE (MAG STANDARD DETAIL NO. 250-2).
17. CONSTRUCT HEADWALL (MAG STANDARD DETAIL NO. 501-1). INSTALL HANDRAIL ON HEADWALL (MAG STANDARD DETAIL NO. 145, TYPE 1).
18. INSTALL "RIGHT TURN ONLY" SIGN PER CITY OF GOODYEAR REQUIREMENTS. INSTALL "DO NOT ENTER" SIGN ON BACK OF POST PER CITY OF GOODYEAR REQUIREMENTS. INSTALL SIGNS ON NEW POST AND BAS (GOODYEAR STANDARD DETAIL NO. G-3209-3).
19. SAWCUT, REMOVE AND REPLACE 4' OF EXISTING A.C. PAVEMENT (MAG STANDARD DETAIL NO. 200-1, "T-TOP TRENCH REPAIR").
20. CONTRACTOR SHALL RELOCATE EXISTING SPRINKLER HEADS AND IRRIGATION MAINS OUTSIDE OF THE AREA OF NEW CONSTRUCTION AS NEEDED TO PROVIDE 100% COVERAGE TO THE TURF AREAS.
21. INSTALL NEW MID IRON SOD IN AREAS OF CONSTRUCTION DISTURBANCE OF THE EXISTING GRASS.
22. CONSTRUCT CATCH BASIN (MAG STANDARD DETAIL NO. 537).
23. INSTALL 2" THICKNESS OF DECOMPOSED GRANITE. SIZE AND COLOR TO MATCH EXISTING.
24. CONSTRUCT 6" X 6" CONCRETE LANDSCAPE CURB.
25. EXISTING SIGN POST TO BE REMOVED, SALVAGED AND RELOCATED. INSTALL NEW POST AND BASE (GOODYEAR STANDARD DETAIL NO. G-3209-3).
26. INSTALL DUAL CHAMBER DRYWELL (CITY OF GOODYEAR STANDARD DETAIL NO. G-3560-1 AND G-3560-2).
27. SAWCUT, REMOVE AND REPLACE EXISTING CONCRETE LANDSCAPE CURB AS NEEDED TO MATCH TOP OF CURB ELEVATION WITH NEW TOP OF CONCRETE CURB AND GUTTER ELEVATION.
28. INSTALL ASPHALTIC CONCRETE PAVEMENT (3" A.C. (1/2" MIX) OVER 6" A.B.C. OVER COMPACTED SUBGRADE).
29. BLACKOUT EXISTING STRIPING PER CITY OF GOODYEAR REQUIREMENTS.
30. INSTALL 2" THICKNESS OF STABILIZED (1/4" MINUS) DECOMPOSED GRANITE. SIZE AND COLOR TO MATCH EXISTING.
31. INSTALL NEW 8" AND 4" SCHEDULE 40 P.V.C. SLEEVES WITH 2' COVER UNDER PROPOSED A.C. PAVEMENT AS SHOWN.
32. PAINT FACE OF CURB RED WITH "FIRE LANE NO PARKING" IN WHITE 3" TALL BLOCK, 3/4" STROKE LETTERING ON THE VERTICAL FACE OF THE CURB PER CITY OF GOODYEAR REQUIREMENTS. LETTERING SHALL NOT BE GREATER THAN 50' APART AND SHALL BE POSTED AT THE BEGINNING AND END OF THE FIRE LANE.

NOTE:
CONTRACTOR SHALL CONDUCT A PERCOLATION TEST AFTER INSTALLING THE FIRST DUAL CHAMBER DRYWELL TO DETERMINE IF ONE DRYWELL IS ACCEPTABLE TO DISSIPATE THE STORMWATER WITHIN 36 HOURS. A COPY OF THE PERCOLATION TEST REPORT WILL NEED TO BE PROVIDED TO THE CITY OF GOODYEAR PRIOR TO FINAL APPROVAL. SEE CITY OF GOODYEAR DRYWELL NOTES ON SHEET C-1 FOR DETAILS.



UNDERGROUND UTILITY TRACER WIRE NOTE:
ALL NEW UNDERGROUND FACILITIES/UTILITIES SHALL BE INSTALLED WITH A DETECTABLE UNDERGROUND LOCATION DEVICE. INSTALL A #18 INSULATED TRACER WIRE SECURELY ATTACHED TO EACH UTILITY AT 8'-FEET ON CENTER. 12" OF TRACER WIRE SHALL BE ACCESSIBLE ABOVE GRADE AT THE TERMINATION AND SHALL BE SECURELY ATTACHED AT THAT POINT. THE CONTRACTOR SHALL VERIFY WHICH COLOR TO USE FOR STORM DRAIN, WATER, SEWER, ETC., WITH THE CITY OF GOODYEAR AND APPROPRIATE UTILITY COMPANIES. THE CONTRACTOR SHALL INCLUDE ALL COSTS ASSOCIATED WITH THIS REQUIREMENT IN THEIR BID.

NOTE:
ALL NEW UNDERGROUND UTILITIES (WATER, SEWER, FIRE AND STORM DRAIN LINES) SHALL BE BEDDED WITH A.B.C., PER MAG SECTION 702, FROM 4" (MIN.) BELOW THE BOTTOM OF THE PIPE TO 12" (MIN.) ABOVE THE TOP OF THE PIPE.

LOCATION AND DEPTH OF EXISTING WATER LINE AND DOUBLE CHECK VALVE IS UNKNOWN. CONTRACTOR SHALL NOTIFY DESIGN ENGINEER OF ANY CONFLICTS WITH COVERAGE OVER EXISTING WATER LINE.

On-Site Adjacent Ways
Off-Site Adjacent Ways



| * SEE SHEET C-2 FOR LEGEND * | | | |
|---|----------|----|-----|
| GRADING AND DRAINAGE PLAN | | | |
| AVONDALE ELEMENTARY SCHOOL DISTRICT | | | |
| BUS DROP-OFF FOR DESERT THUNDER ELEMENTARY SCHOOL | | | |
| DRAWING STATUS | SHEET | OF | |
| 3RD CITY SUBMITTAL SET | 4 | 4 | C-4 |
| DATE: | 12-18-24 | | |